

1 2 3 4 5 6

A

B

C

D

A

B

C

D

M12x1.75 THREAD x 1.00 DEEP
C'BORE DIA .492 x .236 DEEP

PRECISION GROUND
FOR DUAL CONTACT FIT

Ø 1.81

Ø 1.60

SK16 COLLET NUT

Ø 1.25

.65

1.91

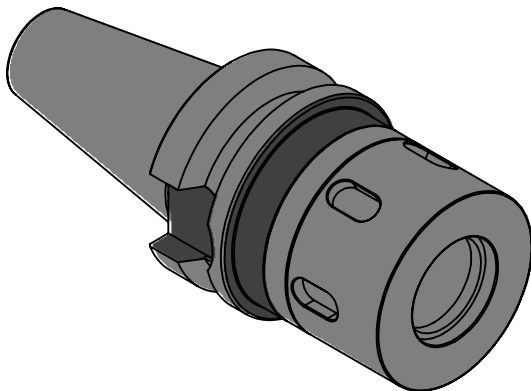
0

.04

.87

1.19

2.36



NOTES:
WORKS ON ALL BT30 MACHINES WITH DUAL CONTACT SPINDLES
COMPATIBLE WITH BIG-PLUS® SPINDLES
TAKES ALL SK16-HT14 COLLETS FROM .09"-.630"
USES WRENCH PART # ER25-BWRENCH (NOT INCLUDED)
FOR MORE PRODUCT DETAILS PLEASE GO TO MARITOO.COM
AND SEARCH ITEM # LISTED ON THIS PRINT

MARITOO

WWW.MARITOO.COM

ITEM#

BT30 SK16-60D

Made in USA

1 2 3 4 5 6